



SEA-BIRD ELECTRONICS, INC.

1808 136th Place N.E., Bellevue, Washington 98005 USA
Telephone: (425) 643-9866 Telex: 292915 SBEI UR
Fax: (425) 643-9954 email: seabird@seabird.com

DATE	REV	REVISION RECORD	AUTH	DR	CHK
6.7.05	A	Added tape to table, new drawing rev	CB	KLP	

SBE P/N 50211

SBE U-Bolt Clamp Set for 12-Bottle Extension Stands

KIT CONTENTS

SBE P/N	Manufacturer P/N	Primary SBE Application	QTY
23694	SBE 32 Cage U-Bolt	Interface Extension Stand to Lower Guard	4
23695	SBE 32 Cage Flange	Interface Extension Stand to Lower Guard	4
30210	Nut, 3/8-16 nylon stop	Extension stand U-Bolts; 1 on CTD bolt (30195)	8
30257	Washer, 3/8 flat	Used with Extension stand U-Bolts	8
30258	Washer, 3/8" Split Ring Lock	Used with Extension stand U-Bolts	8
30409	Tape, 1" Wide, Natural	Protects frame from rubbing	3 ft

Extension Stand Installation

Refer to SBE Assembly Drawing 40683 for Details

1. Wrap a solid layer of Teflon tape (30409) at each of 4 points around the extension stand.
 - a. Use ≈8" per wrap.
 - b. Wraps should be at approximately 90° intervals.
2. Set carousel on top of stand, such that all points are aligned.
3. Place U-bolt (23694) over carousel frame lower guard at each point where it intersects with a tape wrap.
4. Slide flange on from underneath.
5. Secure the assembly with 1 flat washer (30257), 1 lock washer (30258), and 1 stop nut (30210) per threaded end of each U-Bolt.

Parent Part Number: 50211

SBE Drawings:

40683A CTD Extension Stand installation

Sea-Bird Electronics Procedure

PROCEDURE NUMBER: **67078**

TITLE: **SBE32 U-Bolt Clamp Assembly Kit**

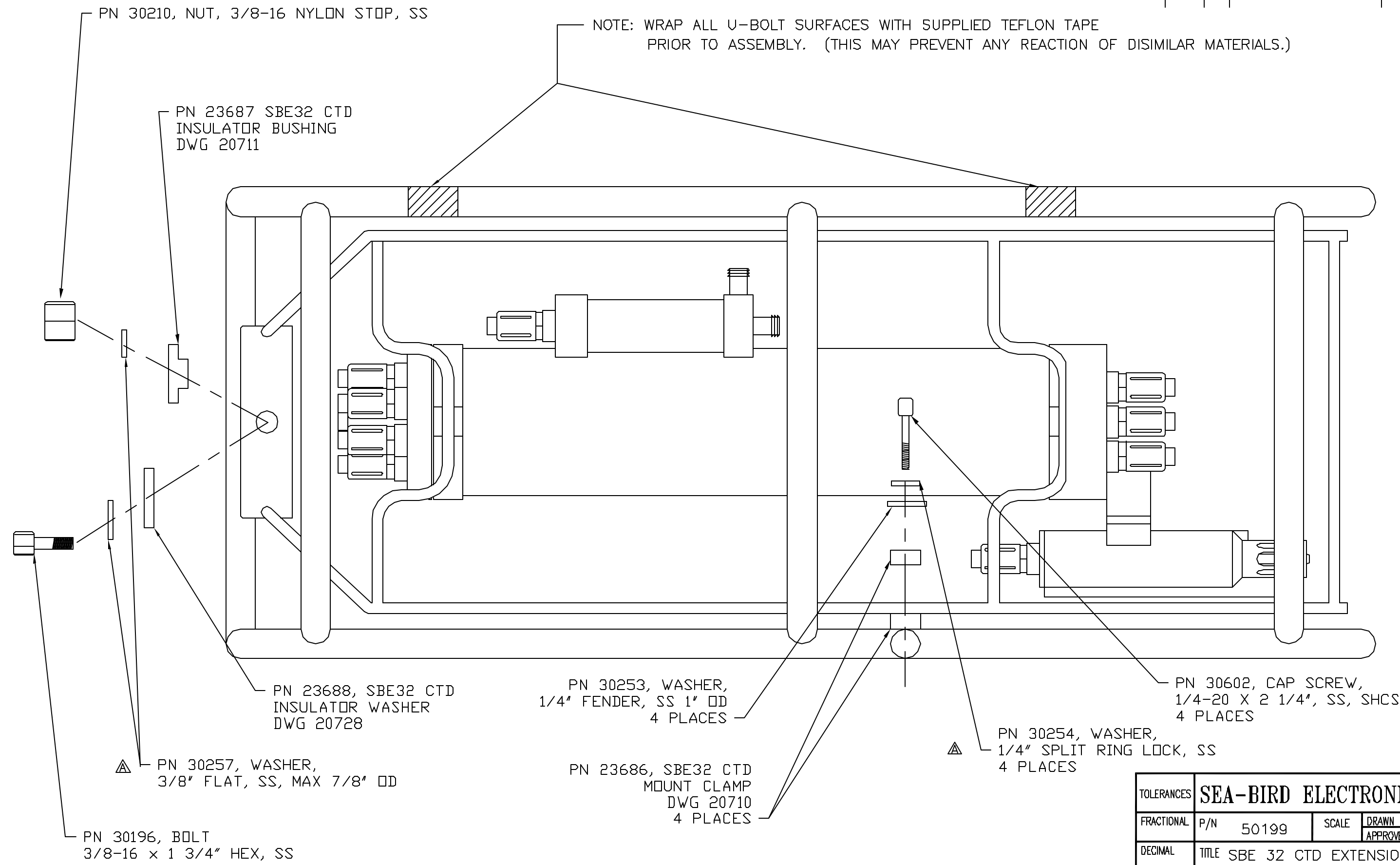
REVISION: **A**

EFFECTIVE DATE: **06/07/2005**

CHECKED BY:

PAGE 1 of 1

DATE	SYM	REVISION RECORD	AUTH.	DR.	CK.
8.27.03	A	ADDED WASHERS		KLP	



PN 30210, NUT, 3/8-16 NYLON STOP, SS

NOTE: WRAP ALL U-BOLT SURFACES WITH SUPPLIED TEFLON TAPE PRIOR TO ASSEMBLY. (THIS MAY PREVENT ANY REACTION OF DISIMILAR MATERIALS.)

PN 23687 SBE32 CTD INSULATOR BUSHING DWG 20711

PN 23688, SBE32 CTD INSULATOR WASHER DWG 20728

PN 30253, WASHER, 1/4" FENDER, SS 1" OD 4 PLACES

PN 30602, CAP SCREW, 1/4-20 X 2 1/4", SS, SHCS 4 PLACES

PN 30257, WASHER, 3/8" FLAT, SS, MAX 7/8" OD

PN 23686, SBE32 CTD MOUNT CLAMP DWG 20710 4 PLACES

PN 30254, WASHER, 1/4" SPLIT RING LOCK, SS 4 PLACES

PN 30196, BOLT 3/8-16 x 1 3/4" HEX, SS

TOLERANCES	SEA-BIRD ELECTRONICS, INC				
FRACTIONAL	P/N	50199	SCALE	DRAWN BY DJM	
DECIMAL	TITLE SBE 32 CTD EXTENSION STAND CTD INSTALLATION				APPROVED BY
ANGULAR	DATE	10/22/93	DRAWING NUMBER	40683	REV A