

# SeaFET™ V2

## Ocean pH Sensor

The SeaFET™ V2 Ocean pH Sensor is an ion selective field effect transistor (ISFET) type sensor for accurate long-term pH measurements in seawater.

### Features

- Solid state ISFET sensor
- AgCl external reference electrode
- Calibrated usin natural seawater
- Internal logging and scheduling
- Internal battery pack

### Applications

- Ocean Acidification research
- Coral reef physiology and sensitivity analyses
- Near-shore biological research
- Environmental monitoring

### Flexible Operating Modes

- Interval sampling mode – samples at pre-programmed interval
- Scheduled mode – begins sampling at internally stored date/time
- Polled mode – sample upon receiving commands



## Optical

Measurement Range	6.5 to 9.0 pH
Initial Accuracy	± 0.05 pH
Precision	0.004 pH
Stability	0.003 pH/month

## Environmental

Operating Temperature Range	0 to 50 °C
Storage Temperature Range	2 to 55 °C
Salinity Range	20 to 40 psu
Depth Range	50 m

## Electrical

Supply Voltage Range	6 to 18 VDC
Power Consumption: Sampling	340-400 mW
Power Consumption: Sleep	10 µA
Batteries	12 x 1.5 V Alkaline D-Cells
Optional Pump Power	12 V, 650 mA

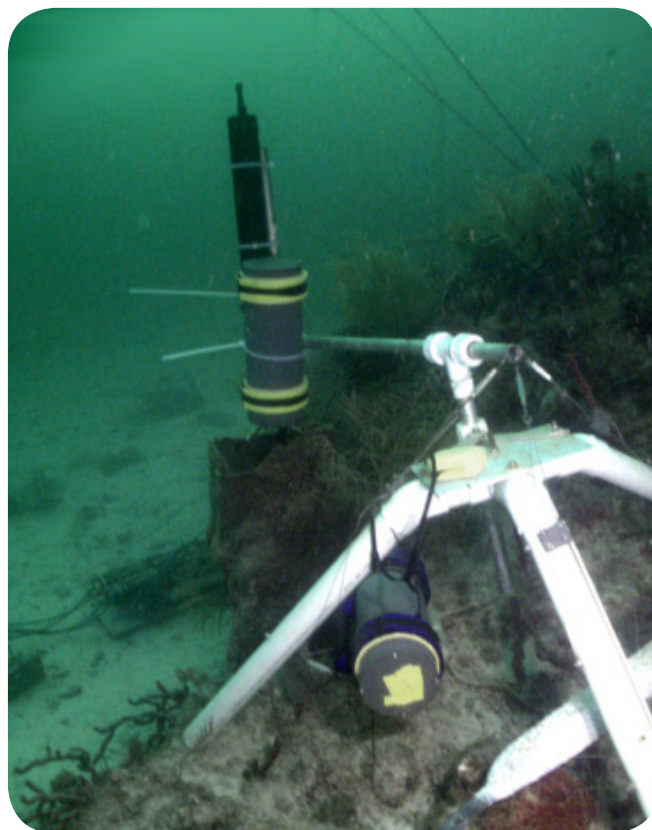


## Mechanical

Dimension: Housing	508 mm L x 114 mm D (20.00 in x 4.48 in)
Dimension: Overall	549 mm L x 114 mm D (21.63 in x 4.48 in)
Weight in air	5.4 kg (w/batteries)
Weight in water	0.1 kg (w/batteries)
Displacement	5300 cm <sup>3</sup>
Materials	PVC

## Communication

External Connector	MCBH8M
Telemetry	RS-232 (9600-115200 baud)
Storage	32 MB (over 1240000 samples)



Specifications subject to change without notice. ©2014 Sea-Bird Scientific. All rights reserved. Rev. January 2018.