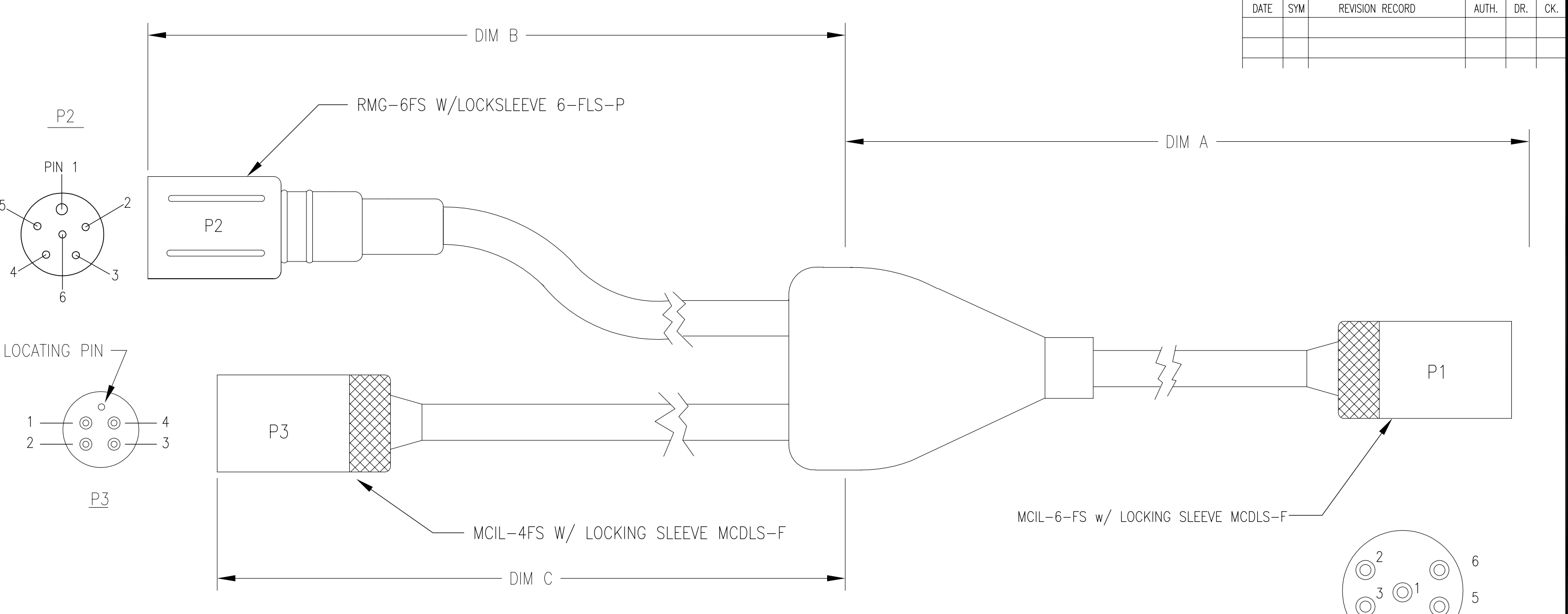


DATE	SYM	REVISION RECORD	AUTH.	DR.	CK.



P1 MCIL-6FS	P2 RMG-6FS	P3 MCIL-4FS
PIN 1	PIN 2	PIN 1
PIN 2		PIN 2
PIN 3		PIN 3
PIN 4	PIN 4	
PIN 5	PIN 5	
PIN 6	PIN 6	PIN 4

SBE PART#	DIM A	DIM B	DIM C
172421	48 IN	36 IN	36 IN
173127	25 IN	28 IN	28 IN

CABLE LENGTH TOLERANCES:
0 - 48" +1" / -0"
48" - 120" +2" / -0"
> 120" +12" / -0"
DIMENSIONS MEASURED FROM FACE OF CONNECTOR

TOLERANCES	SEA-BIRD ELECTRONICS, INC			
FRACTIONAL	P/N SEE TABLE	SCALE NTS	DRAWN BY CB	
DECIMAL	TITLE Y-CABLE, SBE43 & PSA-916			
ANGULAR	DATE 4/18/08	DRAWING NUMBER	33361	REV