

**SEA-BIRD ELECTRONICS, INC.**

1808 136th Place N.E., Bellevue, Washington 98005 USA

Telephone: (425) 643-9866 Telex: 292915 SBEI UR

Fax: (425) 643-9954

email: seabird@seabird.com

SBE P/N 50145

DATE	SYM	REVISION RECORD	AUTH	DR	CHK

SBE 32-12/16Pl to SBE 9plus mount kit*KIT CONTENTS*

SBE P/N	Manufacturer P/N	Primary SBE Application	QTY
23094	SBE 9plus cage insulator	Provide electrical insulation between cage and CTD endcaps	4
23844C	SBE 32 to 9plus CTD mount	Main cage assembly for mounting CTD to Carousel	1
30142	Machine screw, 6-32 x 3/8 PH	Securing screws for 9plus cage insulator	4
30194	Bolt, 3/8-16 x 1-1/4 Hex, SS	Securing bolts for CTD cage clamps	4
30258	Washer, 3/8 split ring lock	Used with CTD securing bolts (30194)	4
30409	Teflon Tape, Adhesive 1 side	Provides electrical insulation between CTD and cage clamps	3 feet

*Refer to Assembly Drawing 67069 for details.***A. Remove Carousel hardware**

- Stand Carousel system upright, such that pylon latch assembly is to the top.
- Hardware from 4 bolts (PN 30603, 1/2-13 x 3-1/2") will need to be removed.
- Do not remove the bolts, as they will still hold upper portion of carousel frame assembly in place.*
- Hold all hardware in a try until cage is installed.

B. Install cage insulators.

- Cage insulators install on outside of cage at the point where the clamps will intersect with the 9plus housing and endcaps.
- Secure each clamp with 1 screw (30142).
- Note on correctly installing insulators.
 - Screw hole on insulator is offset.
 - Insulator installs with short half facing CTD and long half facing side of cage.
 - A correctly installed insulator will be flushed against 3 sides of its bar, with no portions of the insulator hanging over the edge of the cage frame parts.

C. Install CTD Cage

- CTD cage (23844C) part number includes cage and mount brackets.
- Cage portion will install onto the 4 loosened bolts such that welded half of mounting brackets forms a trough.
- Hold cage in place and re-fasten hardware onto the bolts.
- Install flat washer first, followed by lock washer.
- Secure with the same nut that you removed.

D. Install CTD

- CTD lays into the trough made by the 2 mount brackets.
- The 2 clamp portions are placed on top of CTD such that kit hardware will fit into cage clamps.
- Secure clamps to cage with 1 lock washer (30258) first, and followed with 1 bolt (30194) well coated in Never-Seez lubricant.

SBE DRAWING: 67069TITLE: SBE 32 12/16 to SBE 9plus Mount Kit
AssemblyREV:**Sea-Bird Electronics Procedure**

PROCEDURE NUMBER: 67069

TITLE: **SBE PN 50145 Carousel to 9plus Mount Kit**

REVISION:

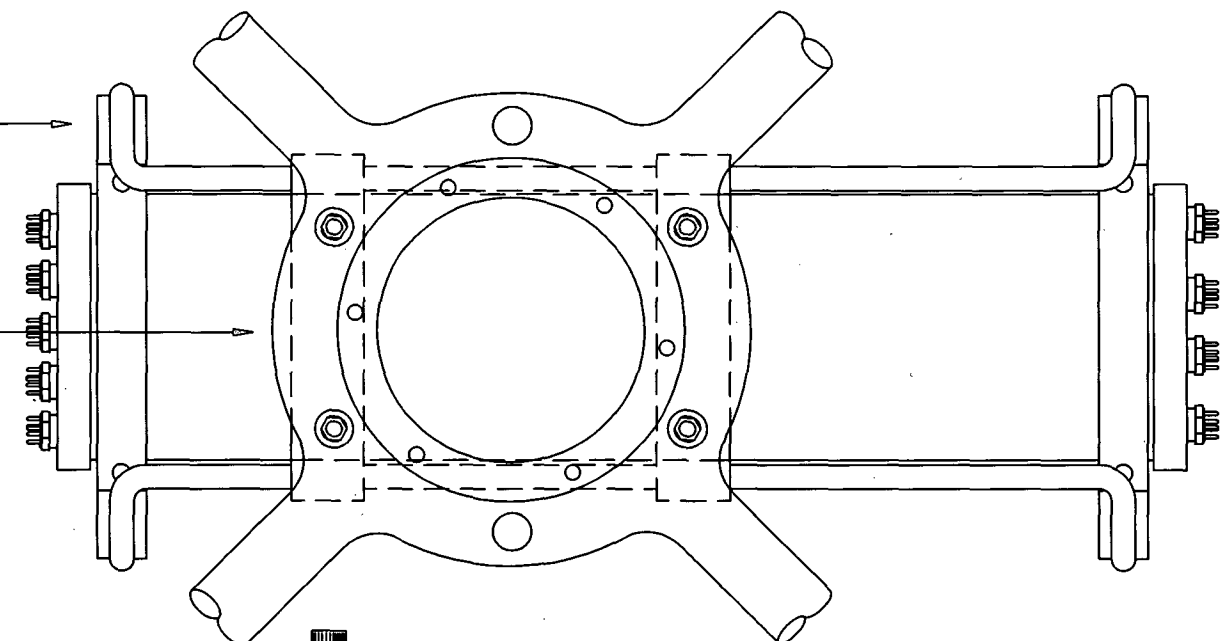
EFFECTIVE DATE: 11/20/2002

CHECKED BY: _____ PAGE 1 of 1

DATE	SYM	REVISION RECORD	AUTH.	DR.	CK.

SBE 32 CTD MOUNT LOADED WITH SBE 9plus (TOP VIEW)

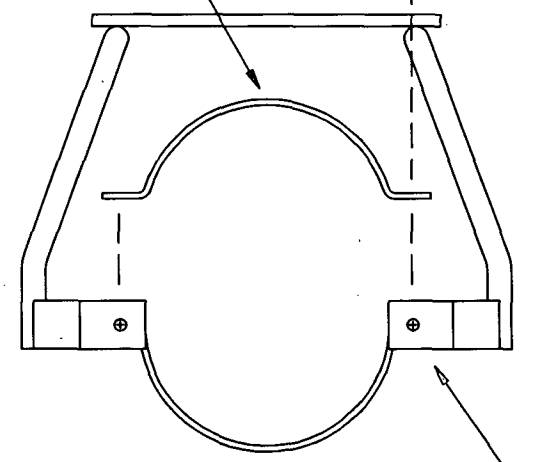
LOWER GUARD/BOTTOM ADAPTER PLATE ATTACHMENT BOLT PATTERN (TOP VIEW) (4 PLACES FOR MOUNT ATTACHMENT)



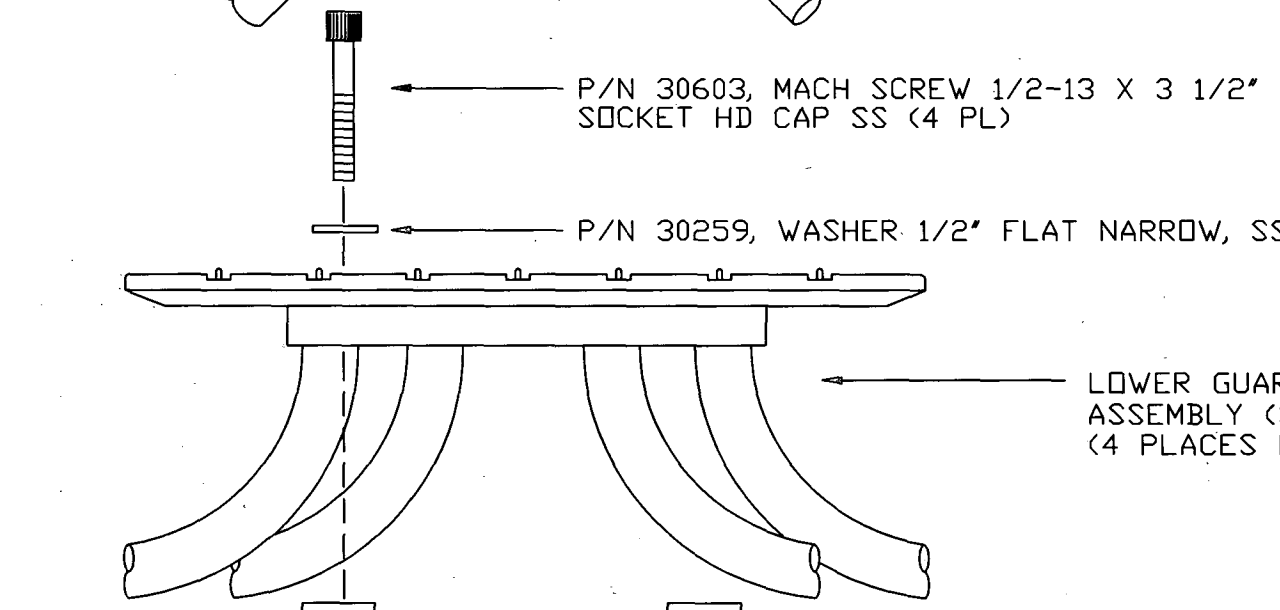
P/N 30194, BOLT 3/8-16 X 1-1/4 HEX, SS (4 PLACES)

P/N 30258, 3/8 SPLIT RING LOCK, SS (4 PLACES)

SEPARATE CLAMP PIECE FOR CTD UNIT (2 PLACES)



CAGE INSULATOR LOCATION (4 PLACES)



P/N 30603, MACH SCREW 1/2-13 X 3 1/2" SOCKET HD CAP SS (4 PL)

P/N 30259, WASHER 1/2" FLAT NARROW, SS (8 PL)

LOWER GUARD/BOTTOM ADAPTER PLATE ASSEMBLY (SIDE VIEW) (4 PLACES FOR MOUNT ATTACHMENT)

P/N 30594, WASHER 1/2" SPLIT RING LOCK, SS (4 PL)

P/N 30231, NUT 1/2-13 HEX, SS (4 PL)

P/N 23844C, SBE32 12/16 9P CTD MOUNT

P/N 23094, SBE 9plus CAGE INSULATOR (4 PL)

P/N 30142, MACH SCREW 6-32 X 3/8 PH, SS (4 PL)

TOLERANCES	SEA-BIRD ELECTRONICS, INC				
FRACTIONAL	P/N 50145	SCALE NTS	DRAWN BY CEG	APPROVED BY RB	
DECIMAL	TITLE SBE32 12/16 TO SBE 9plus MOUNT KIT ASSEMBLY				
ANGULAR	DATE 12.29.98	DRAWING NUMBER	67069	REV	