



# SEA-BIRD ELECTRONICS, INC.

1808 136th Place N.E., Bellevue, Washington 98005 USA  
Telephone: (425) 643-9866 Telex: 292915 SBEI UR  
Fax: (425) 643-9954 email: seabird@seabird.com

DATE	REV	REVISION RECORD	AUTH	DR	CHK
8.03	A	Change Drawing Number	MJ	DB	
7.21.05	B	Changed qty for 30257	KHH	KLP	
10.15.05	C	Added PN 30195	KLP	KLP	

SBE P/N 50199

## SBE 9plus Carousel Mount Kit

### KIT CONTENTS

SBE P/N	Manufacturer P/N	Primary SBE Application	QTY
23686	SBE 32 CTD Mount Clamp	Clamps to secure CTD onto carousel frame	4
23687	SBE 32 CTD Insulator Bushing	Provides electrical insulation for eye pad to cage interface	1
23688	SBE 32 CTD Insulator Washer	Provides electrical insulation for eye pad to cage interface	1
30195	Bolt, 3/8-16 x 1-1/2 Hex, SS	Securing bolt for eye pad to cage interface (use with extension frame 23675C)	1
30196	Bolt 3/8-16 X 1-3/4 Hex, SS	Securing bolt for eye pad to cage interface (use with extension frames 23738C & 23724C)	1
30210	Nut 3/8-16 Nylon Stop SS	Used with eye pad to cage interface securing bolt	1
30253	Washer 1/4 Fender SS	Used with CTD Mount Clamp securing bolts	4
30254	Washer 1/4 Split Ring Lock	Used with CTD Mount Clamp securing bolts	4
30257	Washer 3/8 Flat SS 7/8" OD	Used with eye pad to cage interface securing bolt	2
30409	Teflon Tape, adhesive 1 side	Prevents dissimilar metal damage at cage to U-Bolt interface	1 ft.
30602	Screw 1/4-20 X 2-1/4 SOC HD	Securing bolt for CTD Mount Clamps	4

For details on assembling 9plus into the cage, please refer to included assembly drawing, number 40683.

### A. Install 9plus into extension stand

1. Secure longitudinal cage rails to extension stand.
  - a. Use one clamp (23686) on each side of CTD cage.
  - b. Secure clamps to extension stand with 1 bolt (30602) each.
  - c. Use one pair of washers (30253, 30254) for each clamp pair.
2. Secure eye pad at top of cage to extension stand.
  - a. Fit the Insulator bushing (23767) into the hole at the top of the cage.
    - Face it so the flange on the bushing fits between the cage and the extension stand.
  - b. The bolt feeds through a washer (30257), the insulator washer (23688), the bushing in the cage then through the mount hole in the extension frame.
  - c. A second washer (30257) and a nut (30210) secure the cage to the frame from the other side.

### B. Install extension stand onto carousel frame

1. U-Bolts should be already in place.
2. If you have had to remove the extension stand in order to install the CTD, you should replace any damaged Teflon tape before securing the stand and carousel frame together.

SBE DRAWING: 40683

TITLE: SBE 9plus Carousel Mount Kit Assembly

REV: B

### Sea-Bird Electronics Procedure

PROCEDURE NUMBER: 67074

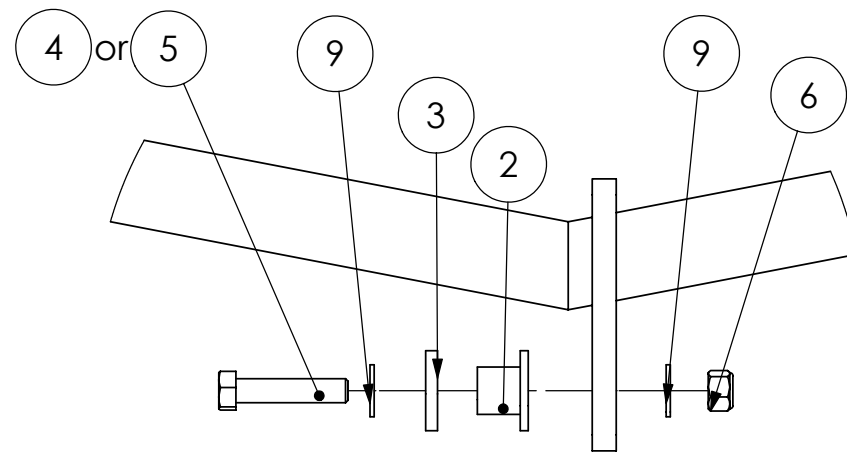
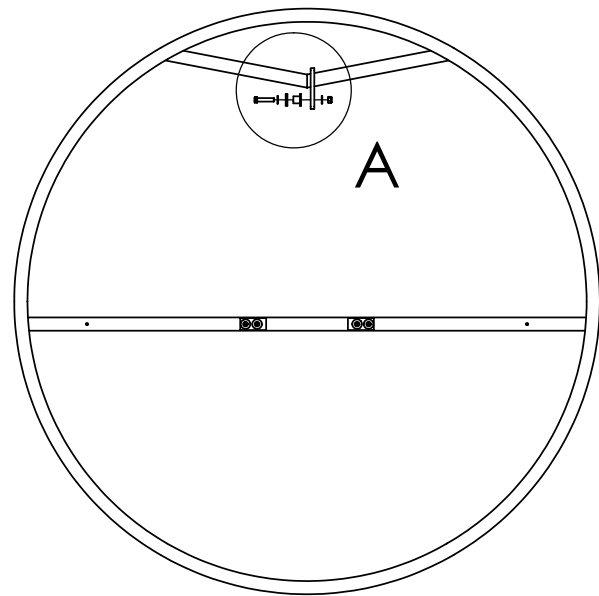
TITLE: SBE 9plus Carousel Mount Kit

REVISION: C

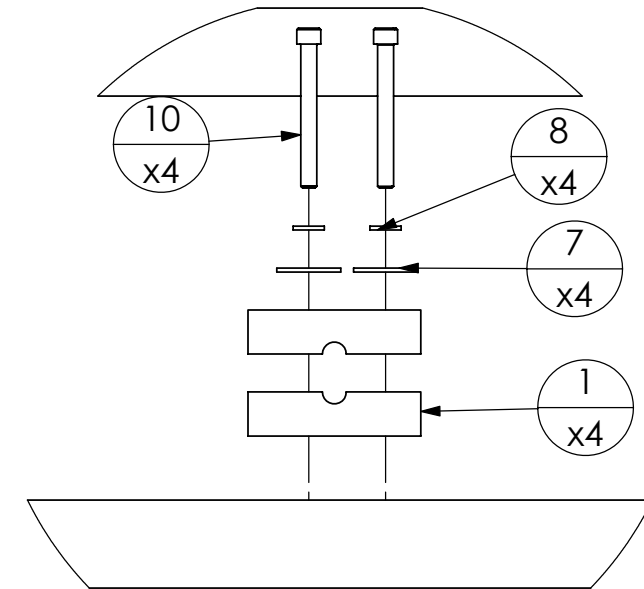
EFFECTIVE DATE: 10/15/2005

CHECKED BY: \_\_\_\_\_ PAGE 1 of 1

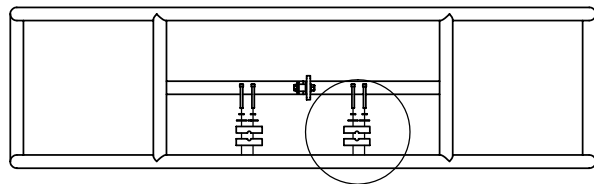
DATE	REV	DESCRIPTION	AUTH	DR.	CK.
10/17/2005	B	Redrew in Solidworks	KLP	KLP	



DETAIL A  
SCALE 1 : 3



DETAIL B  
SCALE 1 : 3



B

ITEM NO.	PART NUMBER	DESCRIPTION	cage top/QTY.
1	23686	SBE32 CTD MOUNT CLAMP	4
2	23687	SBE32 CTD Insulator Bushing	1
3	23688	SBE32 CTD Insulator Washer	1
4	30195	Bolt, 3/8-16 x 1-1/2, Hex, SS	1
5	30196	BOLT, 3/8-16 X 1-3/4 HEX, SS	1
6	30210	Nut, 3/8-16 Nylon Stop	1
7	30253	WASHER, 1/4 FENDER, SS, 1"OD	4
8	30254	WASHER, 1/4 SPLIT RING LOCK, SS	4
9	30257	WASHER, 3/8 FLAT, SS, 7/8" OD MAX	2
10	30602	CAP SCREW, 1/4-20 X 2-1/4, SOCKET HEAD, SS	4

UNLESS OTHERWISE SPECIFIED: DIMENSIONS ARE IN INCHES TOLERANCES: FRACTIONAL ± ANGULAR: ± 2 BEND ± .XX ± .01 TYP RAD .015 .XXX ± .005 MACHINED SURFACES INTERPRET GEOMETRIC TOLERANCING PER: ANSI Y14.5M - 1994	NAME	DATE	SEA-BIRD ELECTRONICS, INC. 1808 - 136th PLACE NE, BELLEVUE, WA 98005 425-643-9866
	DRAWN	KLP	
MATERIAL varies	PROPRIETARY AND CONFIDENTIAL		TITLE: SBE32 CTD Exten Stand CTD Installation
	COMMENTS: <b>DEBUR AND BREAK SHARP EDGES</b>		P/N: <b>50199</b>
FINISH N/A	Old Part/Draw Info N/A /40683		SIZE DWG. NO. REV <b>B</b> <b>40683B</b>
DO NOT SCALE DRAWING			SCALE: 1:20 SHEET 1 OF 1