



SEA-BIRD ELECTRONICS, INC.

1808 136th Place N.E., Bellevue, Washington 98005 USA
Telephone: (425) 643-9866 Telex: 292915 SBEI UR
Fax: (425) 643-9954 email: seabird@seabird.com

SBE P/N 50312

Sea-Bird Anti-Foulant Device In-Line Cap/Cup Assembly

Kit Contents

| SBE P/N | Manufacturer P/N | Primary SBE Application | QTY |
|---------|--|--|-------|
| 233564 | SBE In-Line Anti-Foulant Cup, Black Acetal | AF24173 Anti-Foulant Device resides inside this cup | 1 |
| 233565 | SBE In-Line Anti-Foulant Cap, Black Acetal | Cap seals AF24173 Anti-Foulant Device inside the Cup | 1 |
| 30072 | O-RING, 2-017 N674-70 | Provides a water seal between the Cap and Cup | 1 |
| 31629 | Tubing, 3/8" ID x 5/8" OD, Black Vinyl | Plumbing material for all in-line arrangements | 1 ft. |
| 30389 | Cable Tie, 4", Richco | To secure plumbing material to Cap, Cup, and CTD barbs | 5 |

Procedure for Installing In-Line Assembly

Drawing number 41203B

A. Plumbing Arrangement

1. Plumbing should be installed according to the attached assembly drawing.
2. Secure each end of the tubing to the barbs on the sensor head assembly.
 - a. Two end barbs are provided by the sensor head itself.
 - b. Two central barbs are provided by the In-Line assembly.
3. Cable Ties should be used to fasten tubing onto each barb.
 - a. Tighten cable ties until they begin to squeeze the tubing.
 - b. Do not cinch them down too tight, as they can break under pressure.

B. Anti-Foulant Device Installation

Please read the Anti-Foulant device documentation in your user manual for all information regarding installation and handling of the AF24173 Anti-Foulant device.

C. Re-Assembly

1. Check the o-ring. If it is torn, or heavily misshapen, it should be replaced as well.
 - a. O-Ring lubricant is optional for this application.
 - b. Use only silicon-based lubricants, such as "Parker Super-O", do not use any oil-based lube.
2. Replace the cap, and slide plumbing back over the barb.
3. Secure the new arrangement with a fresh cable tie. Tighten the cable tie just until it just begins to squeeze the tubing.

Parent Part Number: 50312

SBE Drawings:

41203C In-Line Anti-Foulant Holder Assembly

Related Products:

SBE41 ALACE, SBE49 FastCaT

Sea-Bird Electronics Procedure

PROCEDURE NUMBER: 67123

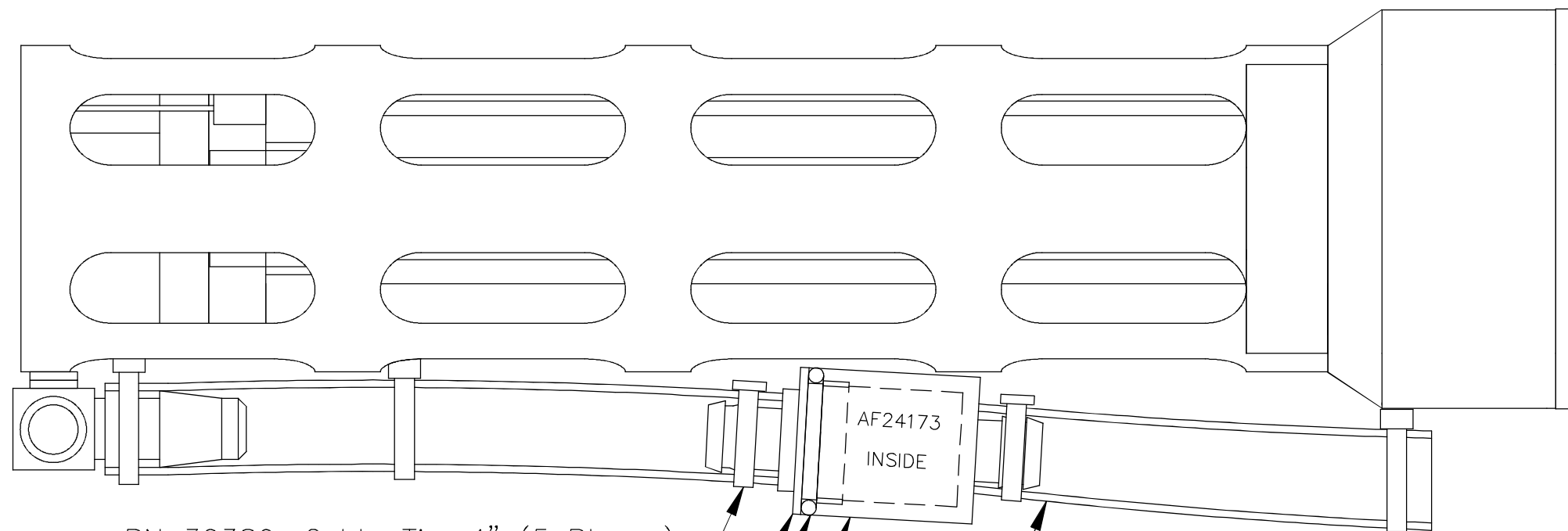
TITLE: **SBE In-Line Antifoul Assembly Kit**

REVISION: C

EFFECTIVE DATE: 07/29/2009

CHECKED BY: PC PAGE 1 of 1

| DATE | SYM | REVISION RECORD | AUTH. | DR. | CK. |
|---------|-----|-------------------------------|-------|-----|-----|
| 2.2003 | A | Revise for AF24173 | KDL | MJ | CB |
| 3.20.03 | B | CHANGED PN'S | CB | KLP | |
| 7.29.09 | C | CHANGED TO BLACK ACETAL/VINYL | CB | PC | CB |



PN 30389, Cable Tie, 4" (5 Places)

△ PN 233565, SBE In-Line Anti-Foulant Device Cap, Black Acetal

PN 30072, O-RING, 2-017 N674-70

△ PN 233564, SBE In-Line Anti-Foulant Device Cup, Black Acetal

△ PN 31629, Black Vinyl Tubing, 3/8" ID X 5/8" OD (2 Places)

| | | | | |
|------------|--|----------------|-------------|--|
| TOLERANCES | SEA-BIRD ELECTRONICS, INC | | | |
| FRACTIONAL | P/N | SCALE | DRAWN BY MJ | |
| | 50213 | NTS | APPROVED BY | |
| DECIMAL | TITLE Sea-Bird AF24173 In-Line Antifoulant Device Cup Assembly | | | |
| ANGULAR | DATE | DRAWING NUMBER | REV | |
| | 07.17.02 | 41203 | C | |